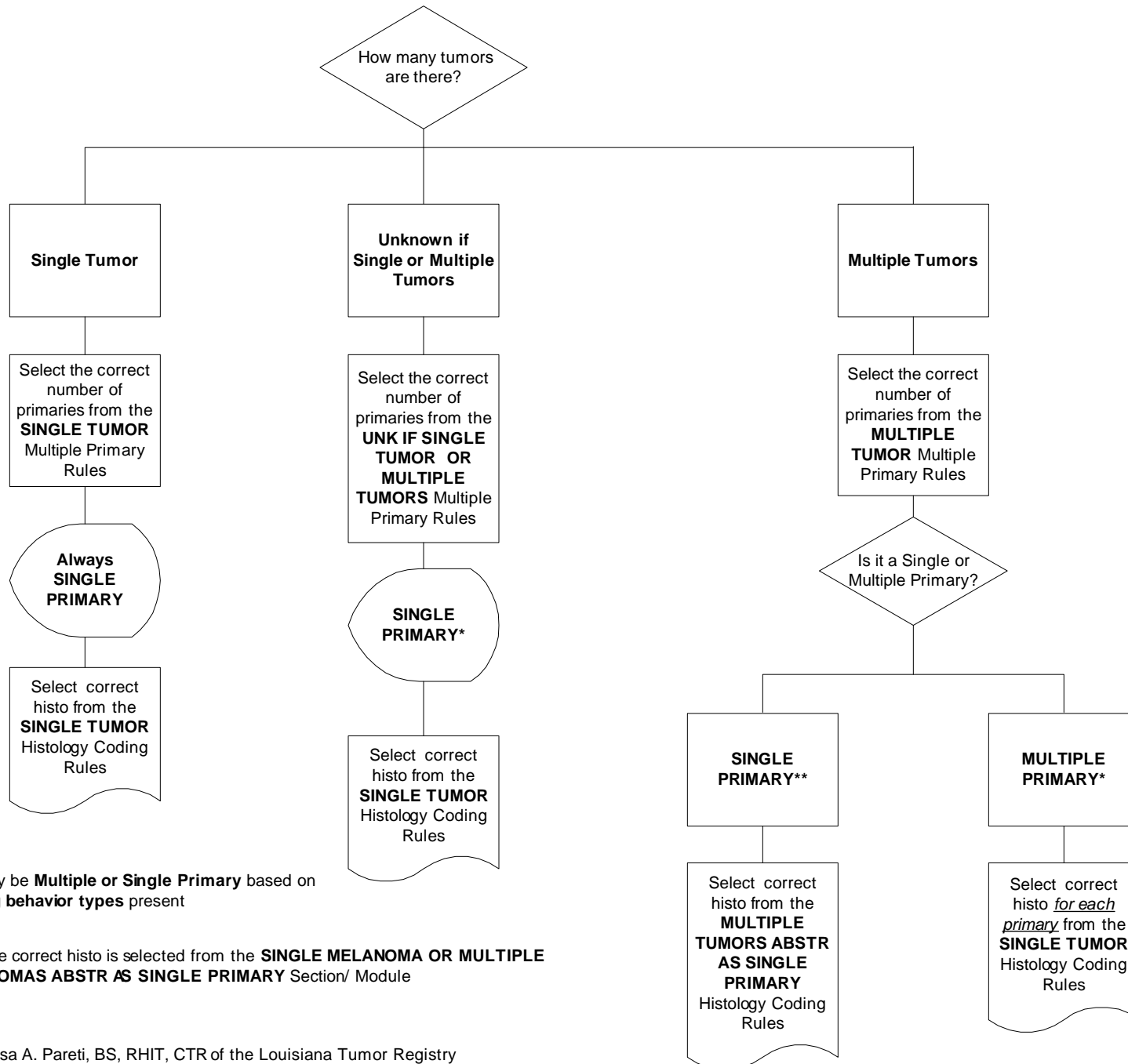


MULTIPLE PRIMARY AND HISTOLOGY CODING RULES: HOW TO SELECT THE CORRECT MPH RULE SECTION/ MODULE



* **Exception: BRAIN**--may be **Multiple or Single Primary** based on differing behavior types present

** For **Melanoma Only**, the correct histo is selected from the **SINGLE MELANOMA OR MULTIPLE MELANOMAS ABSTR AS SINGLE PRIMARY** Section/ Module